

BETTYE HYDE NEWS

December 2007

Festival of Lights—Dec 5th

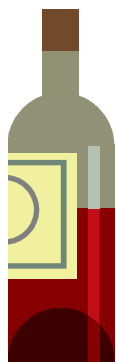
*Thank you for the music...for giving it to (us)
(ABBA)*

Many thanks to all the families and staff for making the Festival of Lights event such a wonderful evening. Most especially, thank you to Kathleen and the children for singing their hearts out for all of the parents.

It was a well-attended concert, which made it very fun for the children and the “after-party” with a smorgasbord of food choices, made for great eating! The kids seem to thrive on the sugary desserts and the noisy chaos of a party at Bettye Hyde.

Many thanks to all of those people who contributed such a variety of delicious food.

For any parents who missed the event, it was covered extensively by the parent paparazzi with video and still digital cameras.



The Great Grape Raffle

This year the Great Grape Raffle is looking better than ever!

Each family have \$20 worth of tickets to sell. It is hoped that you can sell them, but of course, it is not mandatory. If you know that you will not be able to sell them, or if you need additional tickets to sell, please speak to one of the BH staff ASAP.

Due to an error on the printed tickets, we need you to correct the information to read “3 tickets for \$5”.

Don't forget that there is an expected donation of one \$10-15 bottle of wine per family that will be sorted by Bettye Hyde “sommeliers” into spectacular cases for the raffle winners.

Please bring your donation of wine by December 17th and your ticket stubs, money, and unsold tickets by Wed, December 19th at 4:30pm



Co-operative Nursery School

Important Dates in December

December 1st – World AIDS Day

December 5th — Festival of Lights Concert

December 7th — PD Day

December 4-12th - Hanukkah

December 10th —Human Rights Day

December 19th—Great Grape Raffle

December 20th — Eid ul-Adha

December 21st—Winter Solstice

December 24th—Jan 4th—school holiday

December 25th—Christmas

December 26-January 1st—Kwanzaa

Inside this issue:

Staff Spotlight	2
ECE Students	2
Important Info for Parents	3
Board News	4
Parent Resources	4

Catherine Stuart— The Building Blocks of Life

Psychology major, Catherine Stuart, relocated to Ottawa from her birthplace of Victoria. Many of her mates had made the obvious move from Victoria to Vancouver to work and settle. Catherine and her partner Dave had other plans.



With a sense of adventure, Catherine is an intrepid traveler. Courageously, she chose Ottawa as her new home, despite having no family or social support here. The first year was challenging, but Catherine adapted easily and developed new friendships quickly through her Early Childhood Education program at Algonquin College.

In 2005, Catherine did her ECE placement at Bettye Hyde and that was the start of her continued commitment to the preschool. Coincidentally or by fate, when Catherine settled in Ottawa, she moved to Chapel St., just a block from Bettye Hyde. When her placement was confirmed to work at BH, she knew that the stars were aligning to connect her to the school.

With a Psychology degree under her belt with a focus on children's literacy and counseling, Catherine was tempted to continue on to do a Master's in Psychology but decided to follow her desire to work with children first. She was no stranger to this work though, as her Mother was a preschool teacher in a cooperative out West and Catherine inherited her love of children from her experiences at her Mother's school.

At Bettye Hyde, Catherine really appreciates the parent involvement, the diversity and the size of the school. Perhaps it's the traveler in her, but she particularly loves the children's field trips. Catherine is also a creative photographer and has completed photo courses in Malta with renowned Canadian photographer, Dave Trattles. At Bettye Hyde, she really enjoys "The Master's" art activity where the children interpret their own versions of various famous artists.

Speaking of Master's—In the future, she hopes to visit family in Abu Dhabi and Australia, and perhaps pursue her dream to complete a Master's in Child Studies.

Despite the challenges as an ECE (keeping your energy up, etc), Catherine finds her work extremely rewarding. Supporting children's development and communicating effectively with children and their parents is her forte. These years are "the building blocks of life" and Catherine is really really good at it.

Thanks to our ECE Students

Please take some time to say thank you to Haishan and Jamaal, the two energetic ECE students that have been doing their practical placement at Bettye Hyde this term.

Their last day at Bettye Hyde will be Friday, December 14th. They have contributed a lot to our school and so we'd like to thank them for their outstanding work with our kids. We wish you both the best in your studies!!!!

MARILYN FRENCH

To nourish children and raise them against odds is in any time, any place, more valuable than to fix bolts in cars or design nuclear weapons.

ROGER LEWIN

Too often we give our children answers to remember rather than problems to solve

Psst! Hey Parents! Read This!

After-Hours Fee Increase

Effective January 7th, the fee for after-hours care at Bettye Hyde will increase from \$4 for 30 minutes to \$5 for 30 minutes. All of the optional fees increased in September except for the after-hours fee so this increase is actually late in coming. Please note that purchasing after-hours care "coupons" in advance is more economical. It would also be appreciated, if you know in advance that you will be requiring after-hours care, to let the staff know as soon as possible to facilitate appropriate staffing.

Parking

Just a reminder to parents that Bettye Hyde have only two designated parking spaces in the parking lot. One space is for the Director of Bettye Hyde and the other spot is for the Parent Assist (the parent on "duty" that day). Please do not park in the parking lot if you are not attending Bettye Hyde as the Parent Assist. There is street parking on the surrounding streets.

Winter Clothing

Please ensure that the spare set of clothes in your child's locker is seasonally appropriate. Now that we're into winter, this means long sleeve shirts, pants, warm socks, etc. Also, as the children are outside in the playground as much as possible, they need to have warm clothing, and ideally water-proof mitts rather than gloves

New Staff Hours

We are pleased to announce that Bettye Hyde director, Cindy, will be returning from Australia. We look forward to having her back with us in the New Year. As of January 7th, staff schedules have changed slightly. We are including everyone's schedules to help parents know which teachers are with us when.

Cindy	Mon-Fri 8:30-1pm (administration in the afternoon)
Lisa and Janet:	Mon-Fri 8:30-5:00
Catherine	Mon and Wed 9:00-4:30 Tue, Thurs and Fri 11:30-4:30
Danielle	Tues/Thurs/Fri 9-12:30
Robyn	Mon/Wed 11:15-1:15

Food Hamper Contributions

There is a food drive underway at the All Saints Church. Any donations of non-perishable food would be appreciated. The church run a small food bank and they will also be contributing a food hamper to a family at the Shepherd's of Good Hope this season.



Co-operative Nursery School

317 Chapel Street

Ottawa, ON

K1N-7Z2

Phone: (613) 236-3108

BettyeHydeOttawa@gmail.com

Success Stories Wanted

One of the most successful promotional items that has attracted new families to Bettye Hyde is the "What Parents Say" comments section of the website.

We'd love to update this comments page with new success stories and testimonials. If you have something that you'd like to contribute, please forward it to a member of staff or to:

bettyehydeottawa@gmail.com

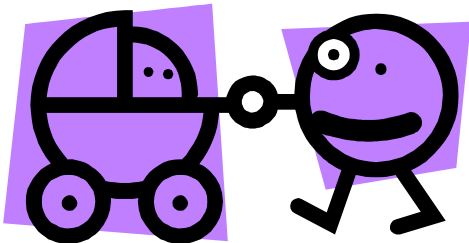
We'd also love to add a section for children's comments so if your child has told you what they love about the school, or what they have learned, please share it with us.

Next board meeting: Wed, Dec 19th, 100 Goulburn

www.bettyehyde.com

Parent Resources

Are you looking for someone to look after your kids? Do you need a break? If so, you can count on me! I'm a 13 year old girl who lives in Sandy Hill, and loves to babysit. I've taken the babysitting course and I have over a year's experience. Please call me at 613-565-0618, or email me at anna.caulfield@rogers.com.



Bettye Hyde Wish List

This is the "wanted", freecycle, and classifieds section.

This issue we've a special request from Bettye Hyde staff for items that they could really use in the school:

- scrap paper for the free art area
- bread ties, concentrated juice lids and other interesting bits for gluing in the free art area
- notebooks, cards, postcards for the writing center
- a small, lockable filing cabinet

If you have something you think we might be able to use at the school let us know. We're always looking for fun and interesting things to add to the program. Thanks!